

# Youth Risk Behavior Survey Alcohol Use Trends



## **YRBS TREND COMPARISON BY GRADE LEVEL 2005-2013**



[opi.mt.gov](http://opi.mt.gov)

Montana  
**Office of Public Instruction**  
Denise Juneau, State Superintendent

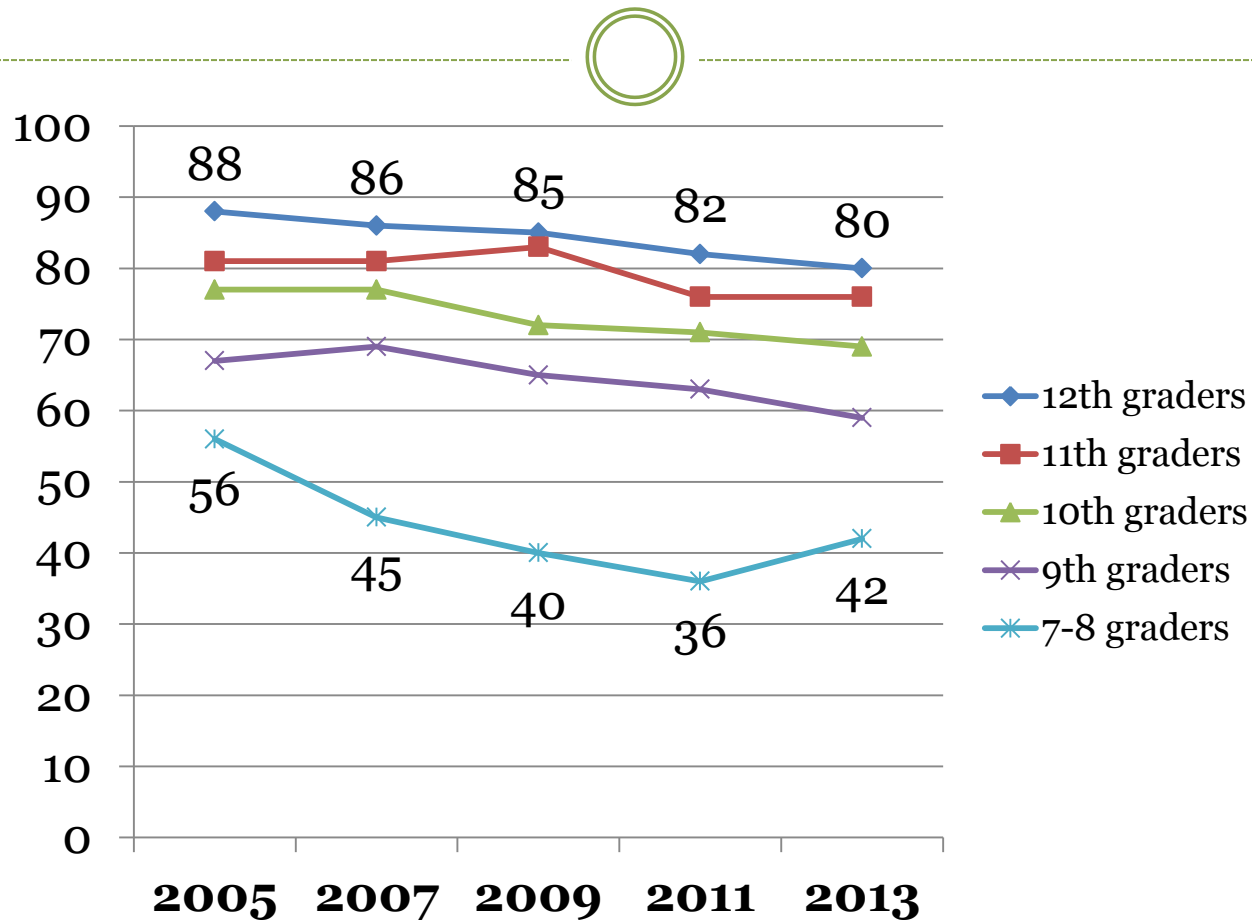


## Data Explanation

- Data presented in the graph for alcohol use before age 13 years can be explained by the younger the student, the more likely they are to actually remember if they were age 12 or 13 years of age. To most casual observers the data seems ‘inverted’.



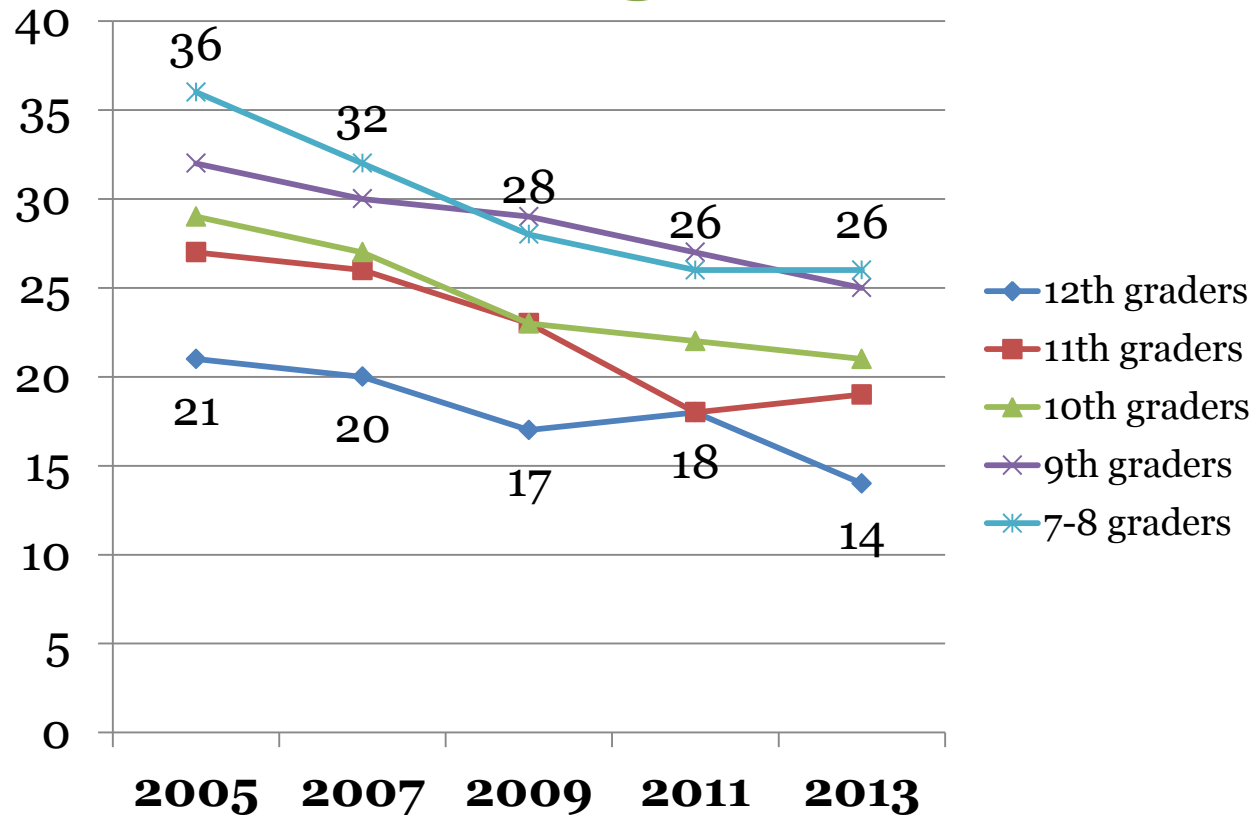
## Percentage of Montana students who had at least one drink of alcohol in their lifetime



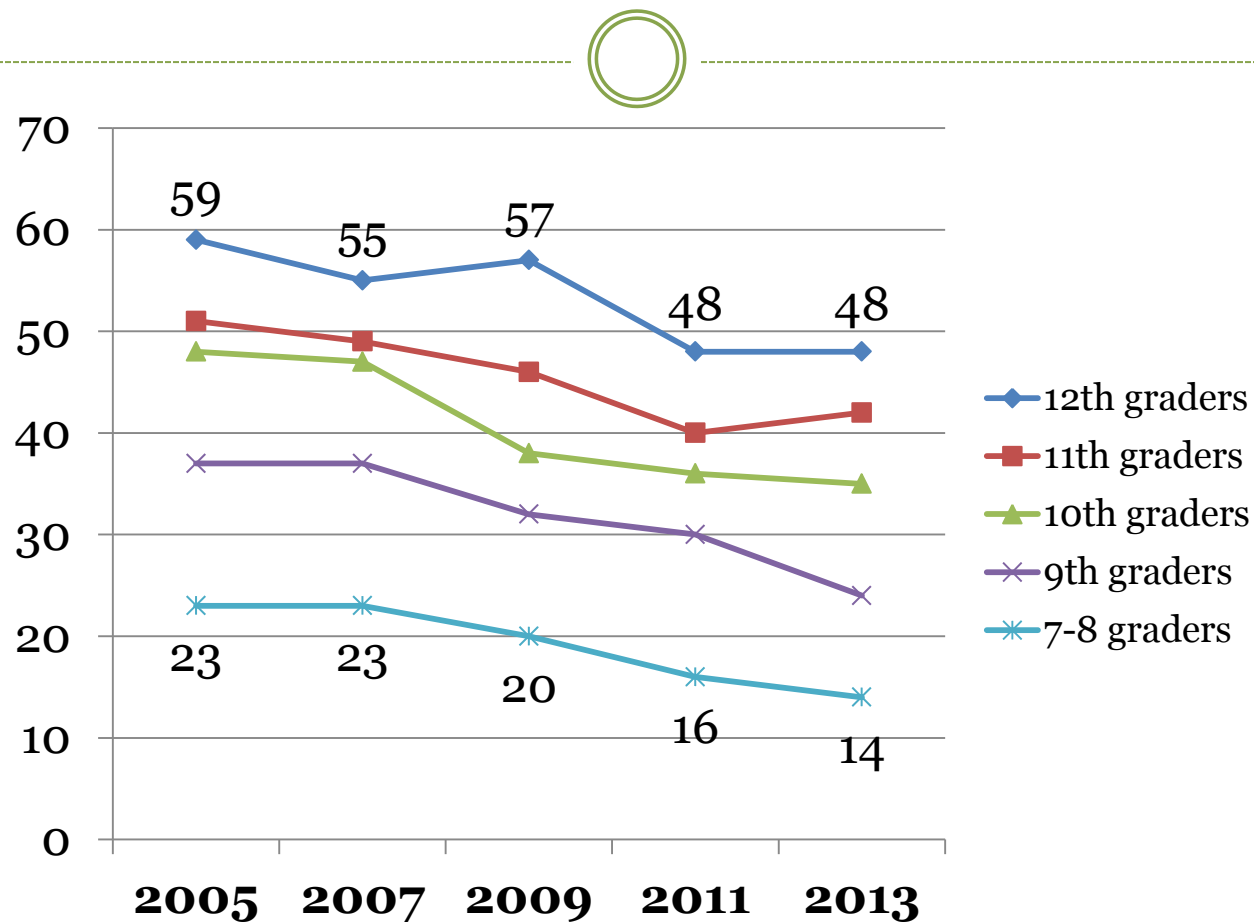
Montana  
**Office of Public Instruction**  
Denise Juneau, State Superintendent

[opi.mt.gov](http://opi.mt.gov)

# Percentage of Montana students who had their first drink of alcohol other than a few sips before age 13 years



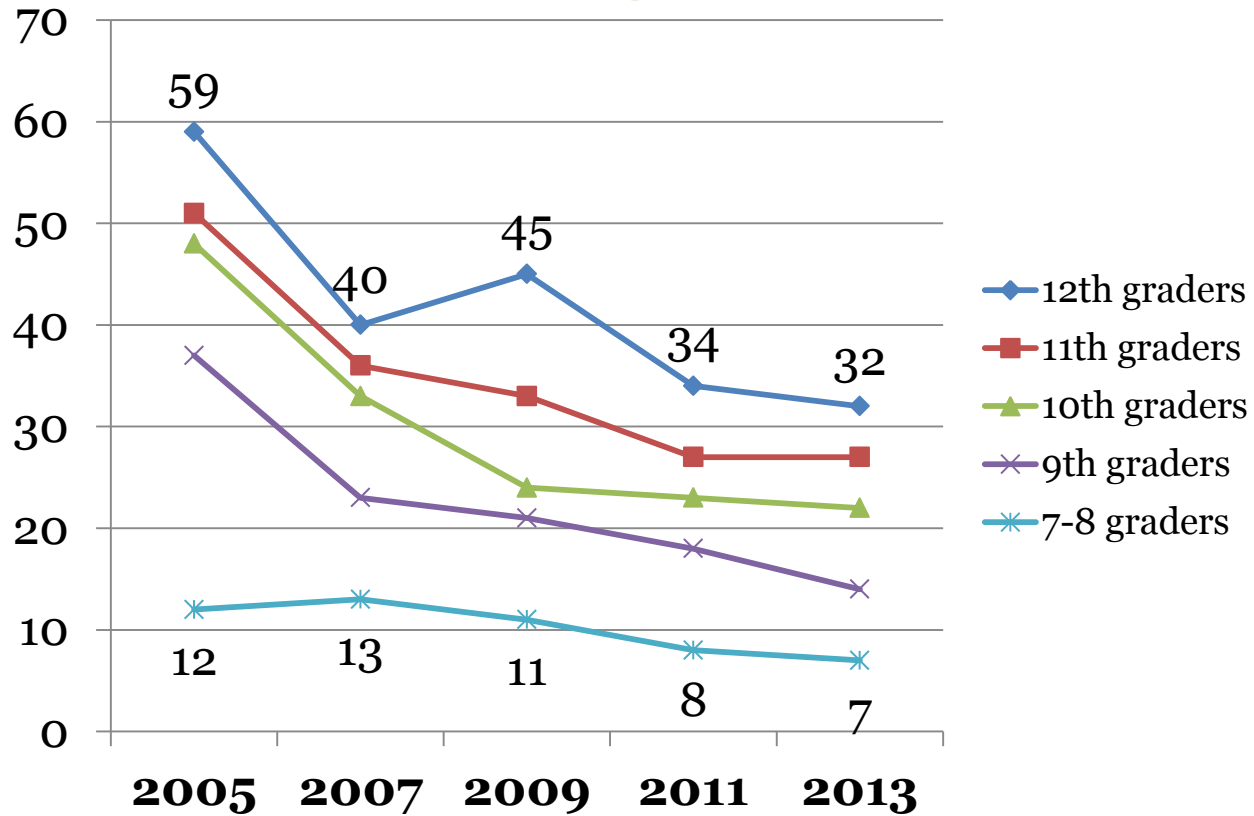
# Percentage of Montana students who had at least one drink of alcohol during the past 30 days



Montana  
**Office of Public Instruction**  
Denise Juneau, State Superintendent

[opi.mt.gov](http://opi.mt.gov)

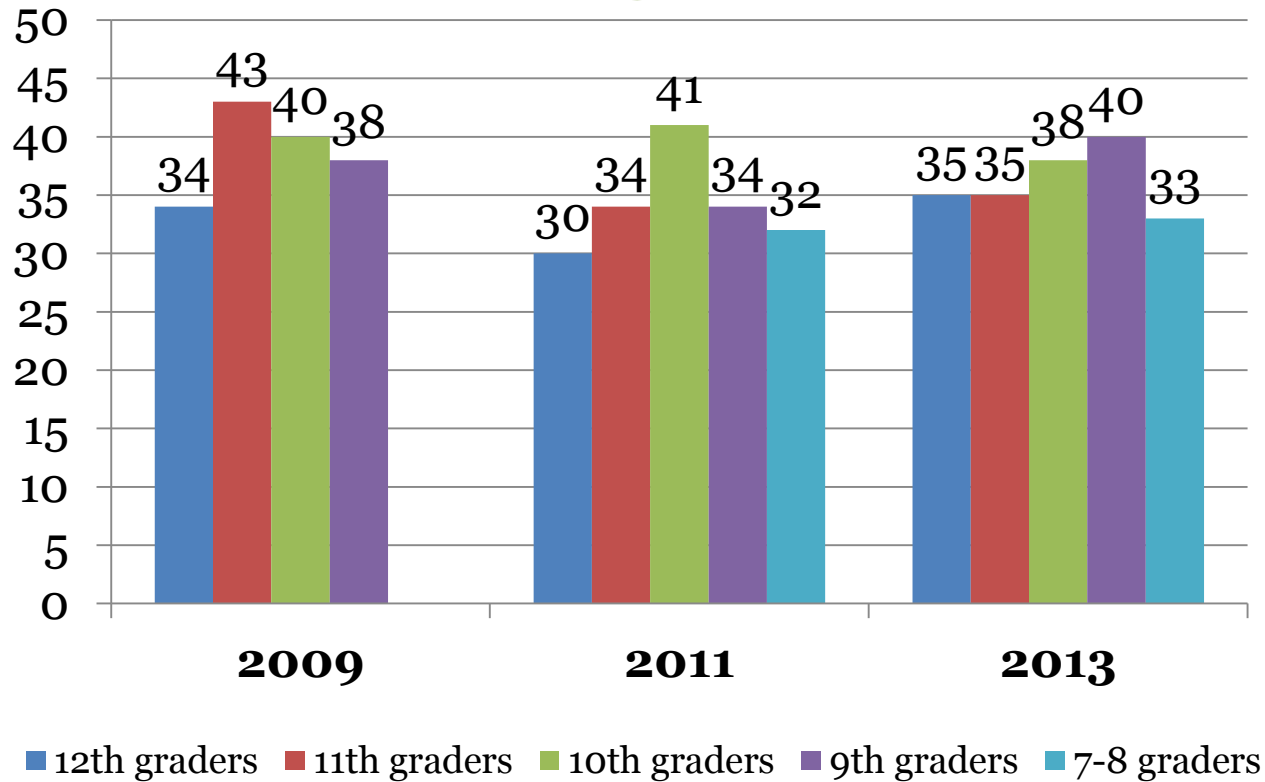
# Percentage of Montana students who had 5 or more drinks of alcohol in a row, within a couple hours, during the past 30 days (binge drinking)



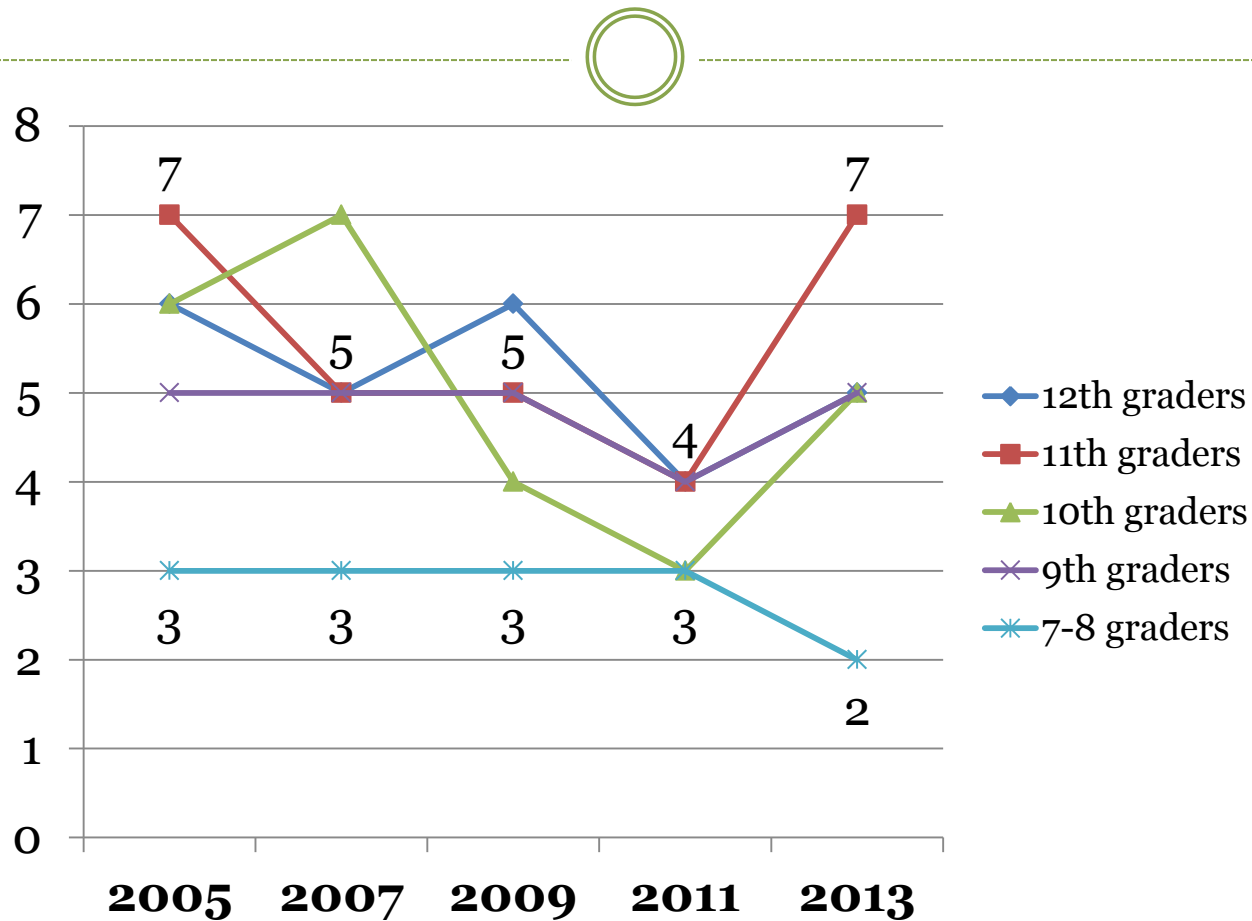
Montana  
**Office of Public Instruction**  
Denise Juneau, State Superintendent

[opi.mt.gov](http://opi.mt.gov)

## Percentage of Montana students who usually got the alcohol they drank from someone who gave it to them (during the past 30 days)



# Percentage of Montana students who had at least one drink of alcohol on school property during the past 30 days





# YRBS



- Montana Youth Risk Behavior Survey
  - [www.opi.mt.gov/yrbs](http://www.opi.mt.gov/yrbs)

**Program contact: Susan Court**  
**406-444-3178 or [scourt@mt.gov](mailto:scourt@mt.gov)**



[opi.mt.gov](http://opi.mt.gov)

Montana  
**Office of Public Instruction**  
Denise Juneau, State Superintendent